

BY EVA DITLER

PATIO PERK UP

OUTDATED DECK GETS TROPICAL TOUCH

As an interior designer, Lori Gentile-Greco had a vision for her own Encinitas patio that transformed an old, small, limited-use deck into an outdoor living space for contemplation and conversation, for drinking coffee in the morning and cocktails in the evening, for sunbathing in the afternoon and stargazing at night.

"The new space is very relaxing and peaceful," says Lori. "The Quan Yin statue — the female goddess of compassion — overlooks the koi in the new above-ground pond formed from striated concrete blocks. I superimposed three store-bought trellises to create a textured backdrop and built an ipe frame around

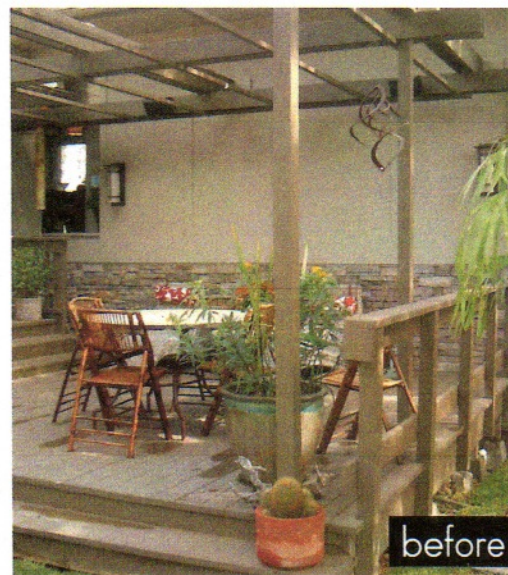
them for strength."

The deck is of ipe Brazilian walnut while the stone patio is of tropical Brazilian porphyry "with occasional fossils of ferns in the stone that I love," says Lori.

"To create a shimmering sexiness, I chose a black glass/black mirror combination gravel inside the fireplace as well as pewter iridescent glass tiles to go on the walls inside the fireplace."

Special features include a built-in bar/barbecue behind the fireplace, an outdoor entertaining system and a handheld shower for outdoor bathing. ■

Where to find it, page 140



before



after